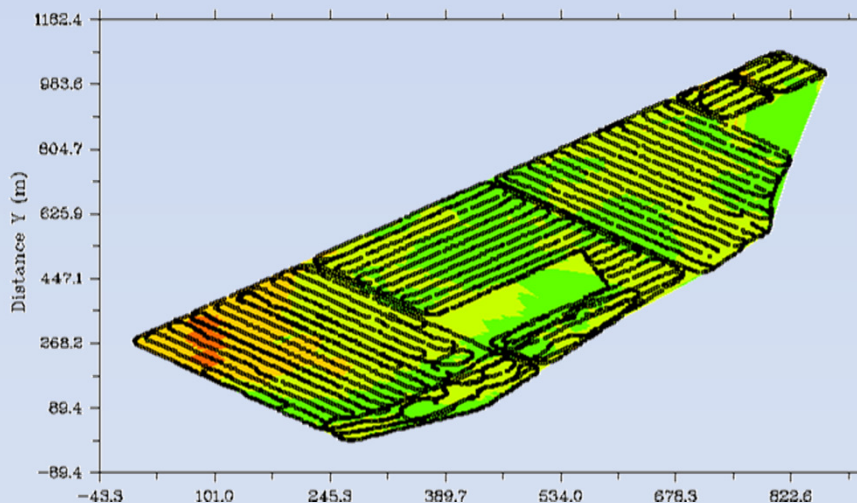


# NEW EMTOMO EM4Soil software designed for FDEM data inversion Suitable for DualEM, GEONICS, GEM2, GSSI EMP400 Profiler.

EM4Soil is a modular software including:

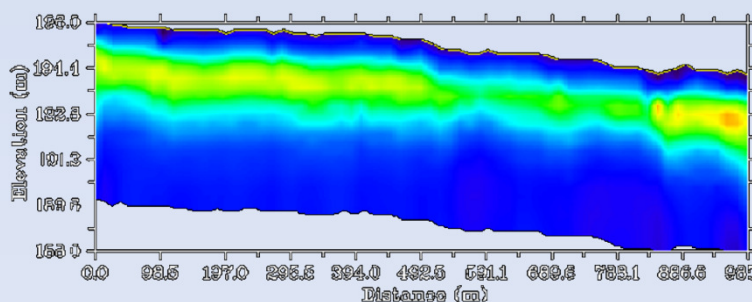
- Inversion algorithm 1D for EM vertical measurements (EM soundings)
- Inversion algorithm 1D *Laterally Constrained* (or quasi 2d - Q2D) for measures along 1d profiles
- Inversion algorithm *Spatially Constrained* (or quasi 3D - Q3D) for measurements along parallel profiles.
- *Export* option as .xyz format for data visualization by other software for geostatistic analysis

**IT IS NOW POSSIBLE NOW TO GET THE INFORMATION  
ABOUT DEPTH OF ANOMALIES**

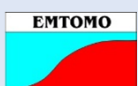
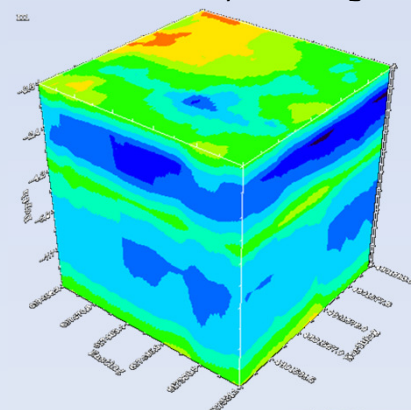


From the acquisition:

.....to Q2D processing....



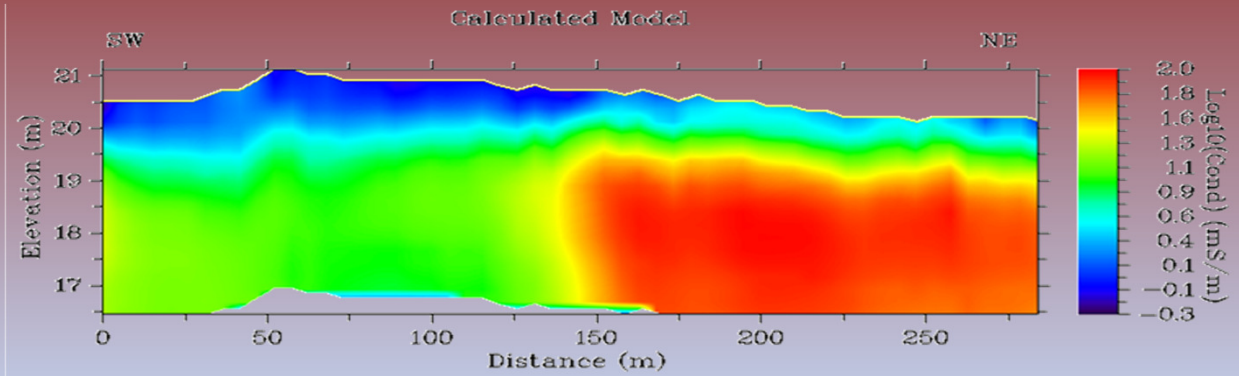
....to Q3D processing



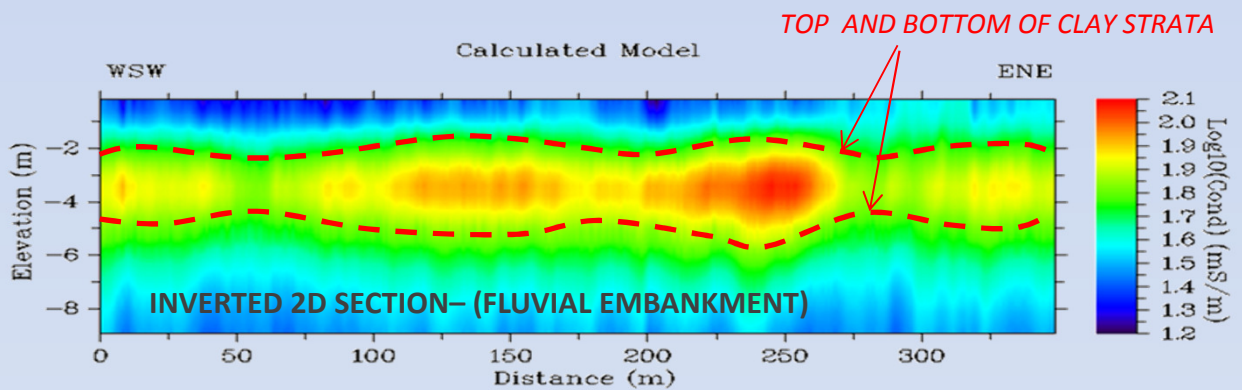
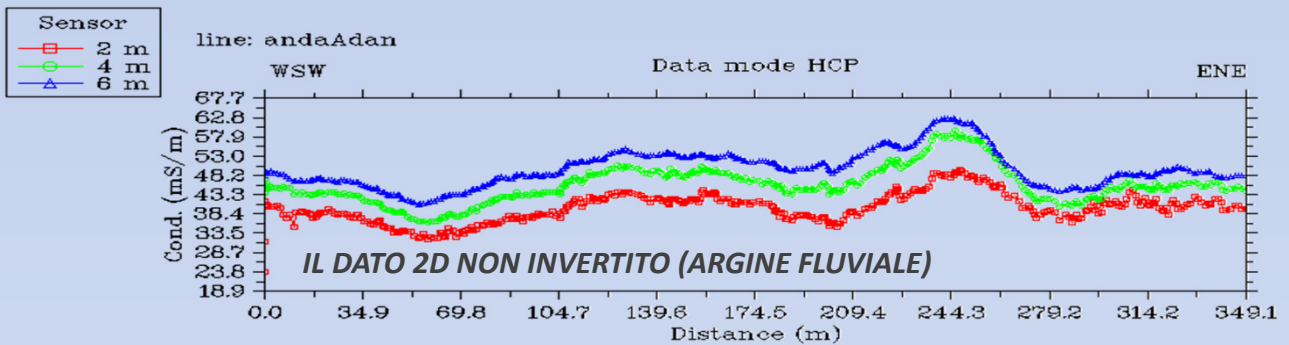
[www.emtomo.com](http://www.emtomo.com)

Geostudi Astier srl – via A. Nicolodi, 48  
57121 Livorno - [www.geoastier.com](http://www.geoastier.com)

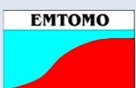
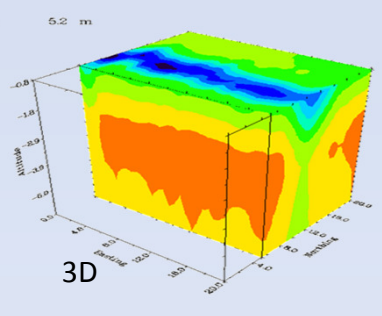
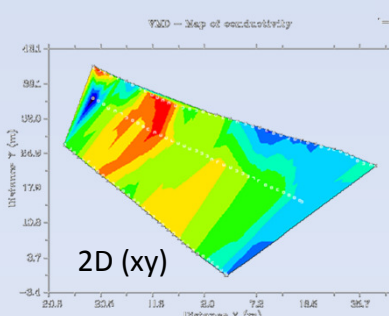
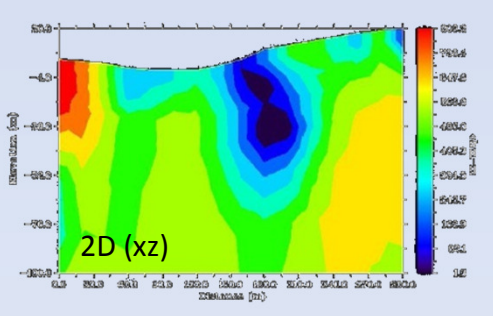




ALTITUDE OF COLLECTED DATA POINT CAN BE INSERTED MANNUALLY OR BY GPS)



DIFFERENT POSSIBILITIES OF INVERTED DATA VISUALIZATION



www.emtomo.com

Geostudi Astier srl – via A. Nicolodi, 48  
57121 Livorno - www.geostudastier.com

