

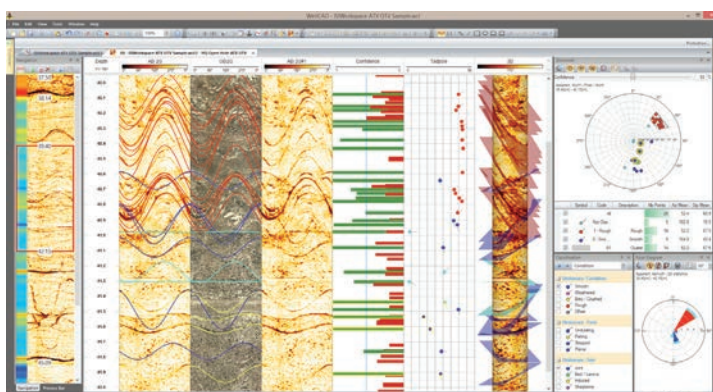
WellCAD v5.1 - release - fact sheet

March 2015

Highlights

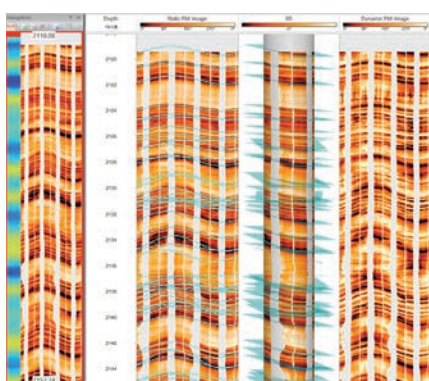
- New **Image & Structure Interpretation (ISI) Workspace** add-on module.
- New **Cross Section** viewer integrated in docking control bar.
- New Planar **structure overlay** for 3D Log.
- New **Waveform** viewer integrated into docking control bar.
- New presentation of the **Log History** and editable **Comments** column added.
- New process to compute **Rock Quality Designation (RQD)** from structure picks.
- New process to extract color components (**RGB, HSV, CIElab**).
- New ASCII data export for Litho, Strata and Comment Logs in **PETREL** compatible format.

Image & Structure Interpretation Workspace



The Image & Structure Interpretation (ISI) Workspace is a new add-on module for WellCAD incorporating and extending the functionality of the old Image module. ISI is a single, build-for-purpose workspace combining structure picking, classification, correction and interpretation into a single workflow. It is fully integrated into WellCAD using the data from a borehole document.

ATV, OTV, 3D Corescan and FMI type images can be analysed. A sophisticated auto picking algorithm assists in finding and picking structures – fast and objective.



Features

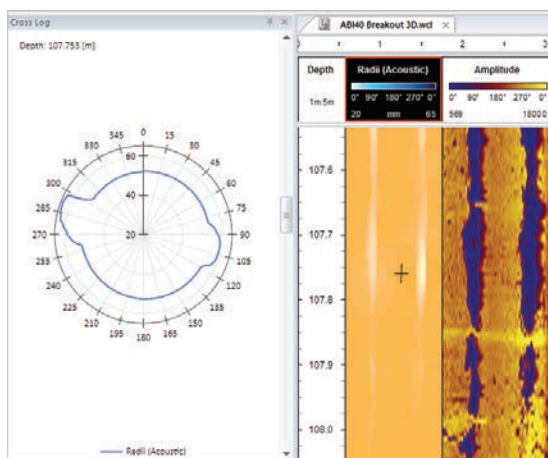
- Full image analysis producing a **Image Complexity Map** which can be used as base for automated zonation.
 - **Automated or interactive zonation** allows structuring the workload and enhancing performance and control.
 - A **Navigation Bar** provides an overview of image, image complexity map and zones.
 - Picking of **planar, linear and free hand structures simultaneously** in multiple images.
 - **Auto Pick** assisted fitting of planar features including partial picks and aperture determination.
 - **Real time** conversion from **Apparent** to **True** picks.
 - A **confidence value** is assigned to each pick allowing pick quality control.
- An **interactive stereonet** is dynamically linked to the structure repository and allows besides a variety of grid options the display of corrected & uncorrected picks, selection of categories to be displayed, clustering of populations and pick reclassification.
 - A **rose diagram** dynamically linked to the pick repository provides azimuth and dip distribution information as the picking continues.
 - **Find similar or most representative picks** algorithms enhance the interpreters control of the data and allow optimization of the picking results
 - Templates assist the user to initialize the workspace effectively for a previously saved context.
 - A **Process Bar** provides all applicable processes and processing parameters in a docking control bar which can be integrated into the user interface.

WellCAD v5.1 - release - fact sheet

March 2015

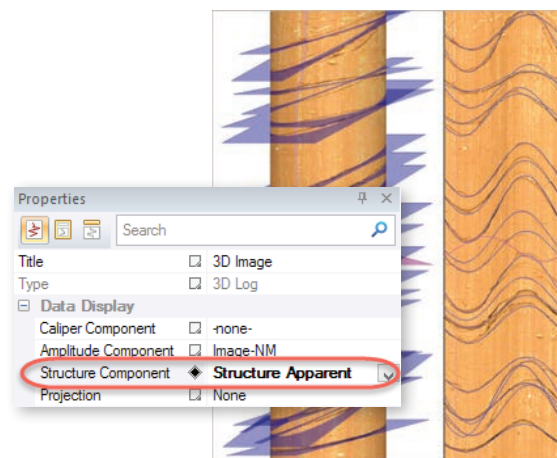
Cross Section Viewer

- A **dynamic cross section viewer** displaying travelttime or multi finger caliper data from Image Logs has been added.
- The cross section display is updated while moving the cursor over the Image log.
- The viewer is hosted in a docking control bar for easy integration into the WellCAD user interface.



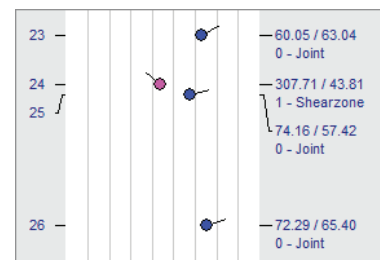
3D Log Structure Display

- Planar structures can now be displayed within the 3D Log. Simply choose a Structure Log providing the uncorrected picks in the 3D Log properties.



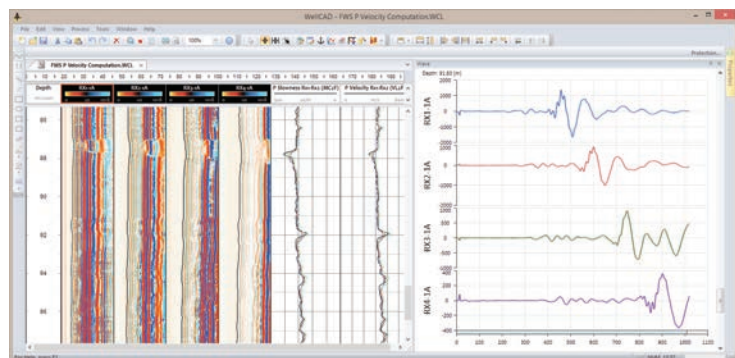
Structure to text conversion

A new log conversion option for the Structure Log has been added. To see text labels with Azimuth and Dip values of each structure pick, its classification or simply an index convert the Structure Log to a Marker Log (Edit > Convert Log To).



Waveform Viewer

- A real time viewer for waveforms stored in FWS Logs has been added.
- Waveforms from multiple data sources (i.e. FWS Logs) at the depth derived from the cursor or scroll bar position are shown and updated in real-time.
- The viewer is hosted in a docking control bar for easy integration into the WellCAD user interface.



WellCAD v5.1 - release - fact sheet

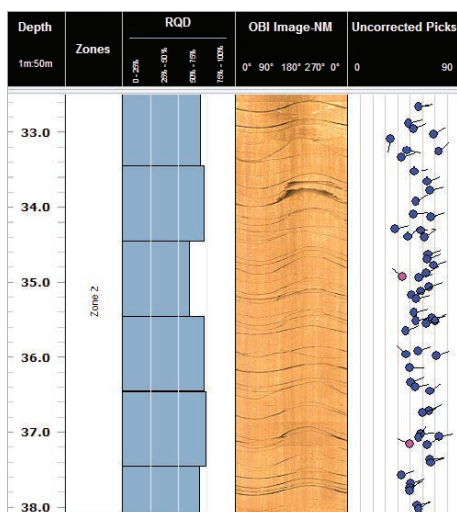
March 2015

Log History Bar

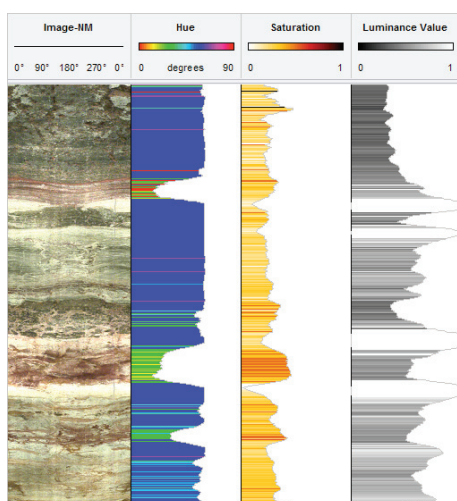
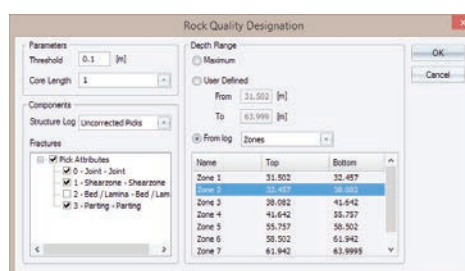
- The log history is now hosted in a docking toolbar in order to be integrated with the WellCAD user interface easily.
- An additional column for user comment has been added. While the entries to log history are made automatically with each action performed on a log the Comment column allows users to enter additional information manually.

Date/Time	Log	Action	Comment
09/03/201...	GRDE fit...	Created as new Well Log.	
09/03/201...	GRDE fit...	Data imported from 'ALT118_Wireline.las'.	
09/03/201...	GRDE fit...	'Filter' (Moving Average, filter width: 15 points).	Original sample step 0.01m
09/03/201...	GRDE fit...	'GRDE' has been renamed as 'GRDE#1'.	
09/03/201...	GRDE fit...	'GRDE#1' has been renamed as 'GRDE filtere...	
09/03/201...	MC4F	Created as new Well Log.	
09/03/201...	MC4F	Data imported from 'ALT118_Wireline.las'.	
09/03/201...	MC4F	'Shift Logs By...' (constant depth shift of 0.7 [m] ...	Shift to measurement point
09/03/201...	MC2F	Created as new Well Log.	
09/03/201...	MC2F	Data imported from 'ALT118_Wireline.las'.	
09/03/201...	MC2F	'Shift Logs By...' (constant depth shift of 0.7 [m] ...	Shift to measurement point

RQD (Rock Quality Designation) Process



- The **Rock Quality Designation (RQD)** is a measure of the degree of fracturing of a rock mass. It is expressed as a percentage of intact rock mass within a reference depth interval (usually the sum of drill core segments 10cm or more in length within 1m of drill core).
- A new process to compute RQD values from selected structure pick categories of a Structure Log has been added.



Color Component Extraction

- A new process to **extract and convert colour components** from RGB Logs (e.g. core photos, OTV images) has been added.
- Supported colour models are RGB (Red, green, Blue), HSV (Hue, Saturation, luminance Value), YUV (PAL) and CIE L*a*b* (Lightness, red/green and yellow/blue components).
- Color components curves or images can be created. This way chromatic change can be integrated with stratigraphic, geochemical, wireline or other geologic data.

Support of Unicode Character set

- WellCAD now fully supports the Unicode Character set which allows for multilingual text being used in WellCAD.

WellCAD v5.1 - release - fact sheet

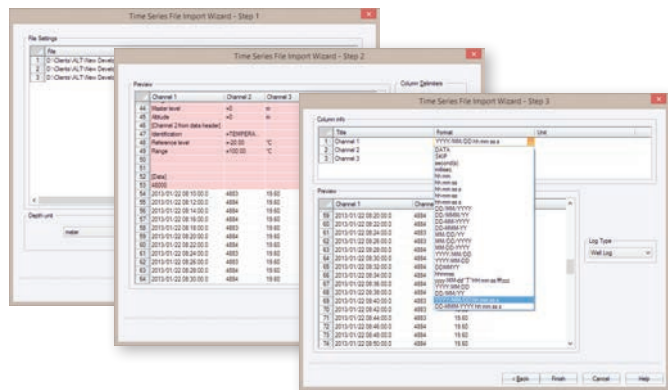
March 2015

PETREL Compatible ASCII Export

- A PETREL specific ASCII export will be available in WellCAD v5.1 allowing the export of Comment, Stratigraphy, Lithology and Interval in a PETREL compatible single depth format.
- During export a lookup table for pattern and symbol code conversions can be defined.

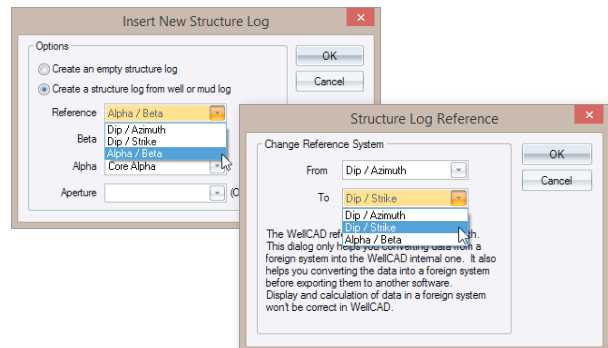
ASCII Import of Time Series Data

- An import for long time series data (e.g. temperature and pressure monitoring in water wells) has been implemented.
- Multiple files (e.g. from different depth stations) can be loaded simultaneously.



Conversion of Alpha/ Beta and Strike / Dip angles into Azimuth / Dip and vice versa

- New Structure Logs can now be created from data sets of Alpha/Beta and Strike/Dip angle. The conversion to Azimuth and Dip will be done within WellCAD.
- It is also possible to convert Azimuth/Dip angles into Strike/Dip respectively Alpha/Beta angles within WellCAD before using them further.



HeadCAD Static Table Properties

Deviation Data Table							
Depth [m]	TVD [m]	Azimuth [deg]	Tilt [deg]	Northing [m]	Easting [m]	Closure [deg]	Closure Dist [m]
50.00	41.80	58.85	13.85	5.04	6.88	42.77	8.54
100.00	89.81	72.05	18.16	10.07	18.23	58.94	20.92
150.00	137.42	81.19	19.11	13.13	32.97	67.30	35.58

- **Operational Symbols** are available to all users now (part of WellCAD Basic).
- Adding annotations has been facilitated through implementation of the **Annotation Bar, Annotation Editor** and **removal of the Annotation Mode**.
- Annotations can be **accurately positioned horizontally** and in **depth**.
- Annotations and Operational Symbols can be imported can be imported from ASCII files using the **Annotation Editor**.

