

TECHNICAL SPECIFICATIONS			
	STREAM X 200	STREAM X 600	STREAM X 600 D
Radar control Unit	1	2	4
Antenna frequency (MHz)	200	600	600
Number of antenna dipoles	8+8	12+12	24+24
Scan width (cm)	180	180	180
Polarization	VV	VV	VV
Data spacing in transversal direction (Cm)	12	8	4
Antenna weight (Kg)	36	18	36
Antenna cart dimensions (Cm)	length: 240 width: 92		
Cart weight (Kg)	22		
Typical data collection speed (Km/h)	15		
SOFTWARE SPECIFICATIONS			
Processing software		<div>GRED HD³ including:</div> <ul style="list-style-type: none">Automatic and manual data processingPropagation velocity estimation (hyperbola fitting)2D/3D representationData fusion for different frequenciesInteractive 2D data inspectorGPS locationIrregular volume representationB-scan and C-scan viewInsert target function	
Output data		Automatic data transfer into CAD maps	



IDS Ingegneria Dei Sistemi S.p.A.
 Pisa Headquarters
 Via Enrica Calabresi 24, 56121 Pisa, Italy
 Phone +39 050 31241 - Fax +39 050 3124201
www.idsgeoradar.com

For further information contact
sales.georadar@ids-spa.it

ENVIRONMENT AND
 ARCHAEOLOGY

STREAM X

The massive array solution for archaeology and environment survey



STREAM X: the dedicated solution conceived to survey large areas



IDS: The leader in multi-frequency
 and multi-channel Ground Penetrating Radar

STREAM X

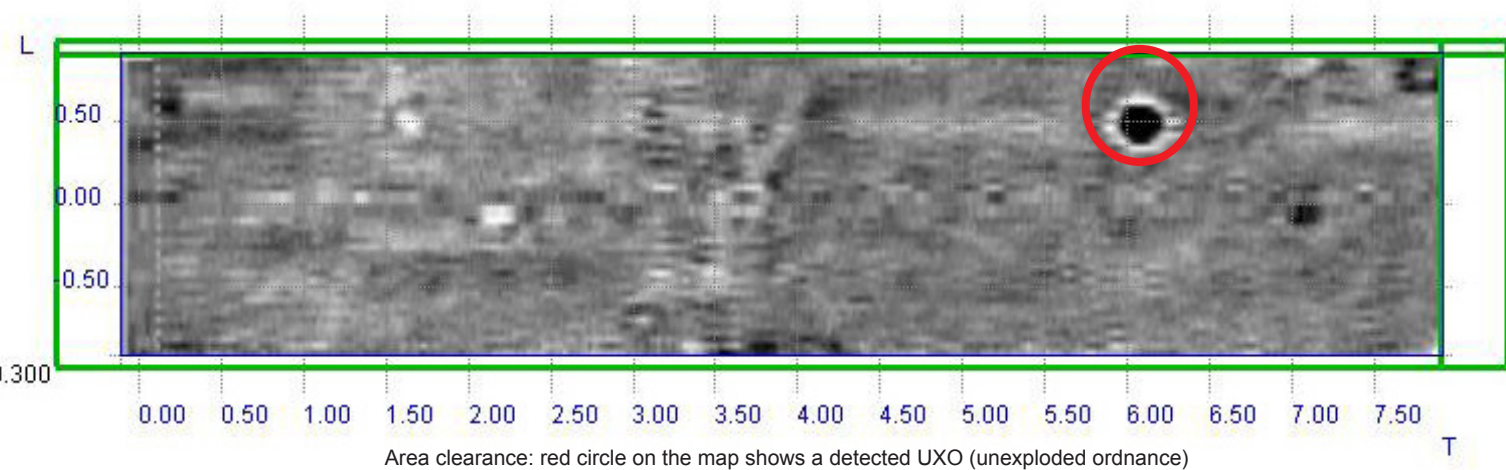
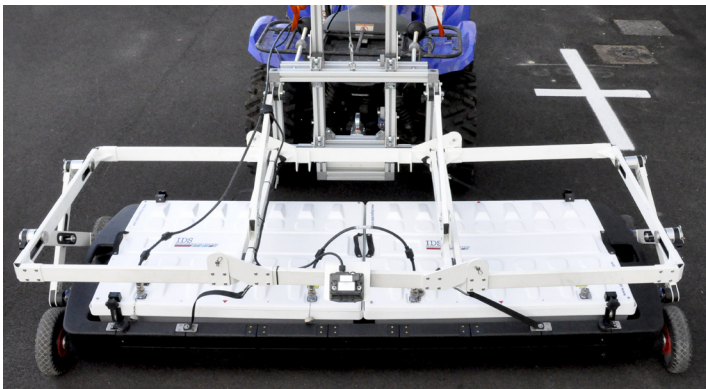
APPLICATIONS

- Mapping of extensive archaeological sites
- Detection of underground structures
- Cavity identification and mapping
- Underground tank detection
- Clearance of area prior to construction
- Uxo detection (unexploded ordnance)



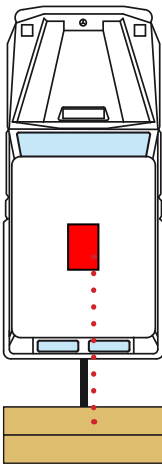
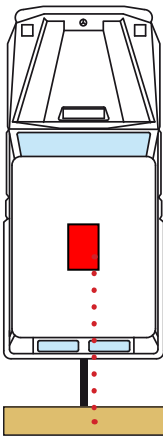
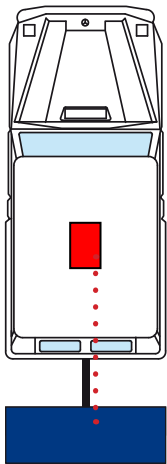
BENEFITS

- GPR solution towed by a vehicle (speed > 15 Km/h)
- Can be dragged by hand or towed by a vehicle
- Suitable for working on rough terrain
- High productivity: > 1 hectare/hour
- Easily transportable (dismounted; the equipment packs into a van)
- Simple and fast area coverage thanks to the real time navigator



CONFIGURATIONS

DAD CABLE DML 200 DML 600



STREAM X 200
Specialized for deep investigation:

- 1 DML 200 (200 MHz)
- 1 DAD MCh
- 8 TX + 8 RX
- 12 cm transversal sampling
- VV polarization

STREAM X 600
Specialized for shallow investigation:

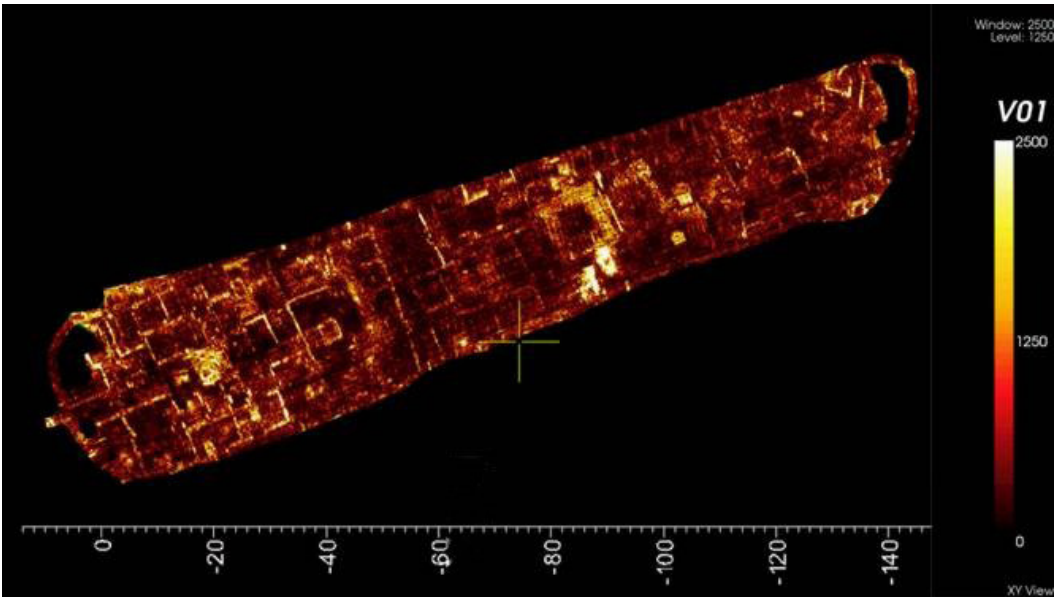
- 1 DML 600 (600 MHz)
- 2 DAD MCh
- 12 TX + 12 RX
- 8 cm transversal sampling;
- VV polarization.

STREAM X 600D
Specialized for high resolution shallow investigation:

- 2 DML 600 (600 MHz)
- 4 DAD MCh
- 24 Tx + 24 RX
- 4 cm transversal sampling
- VV polarization

FEATURES

- Positioning: survey wheel + GPS or Total station
- High resolution images thanks to the following data spacing:
 - up 12 cm @200 MHz
 - up to 4 cm @ 600 MHz
- Greater investigation depth thanks to the high stacking factor and high performance low frequency antennas



Tomographic map showing buried ancient walls on an archeological site at a depth of 1 meter

SOFTWARE FEATURES

GREED HD³ is an advanced processing software specifically designed to be the optimal interface for Stream X data. Key features:

- 2D and 3D tomography for an immediate visualization and detection of anomalies
- Automated transfer to CAD/GIS: the identified target can be automatically transferred to CAD or GIS maps